



Accessories for ST 14 / Ex ST 14 Angled actuator ST 14-B5

Material no.: 1040841 (material no. old: 04.14.8202)

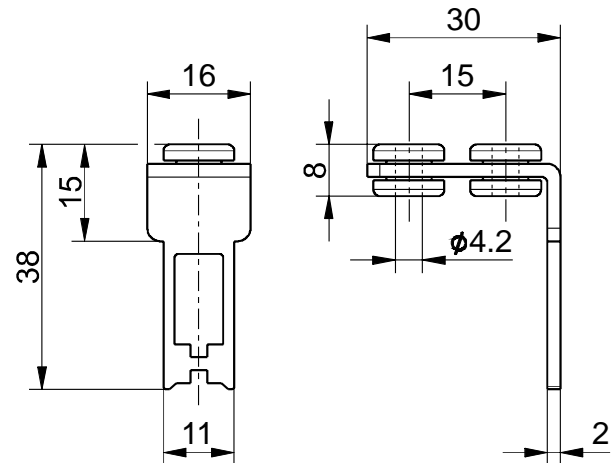
Product features

- Rubber mounting damps vibrations on guard devices
- Suitable for hinged guards
- Stainless steel 1.4301
- Actuating radius on hinged guards:
Axial misalignment $x = 15$ mm;
 $a = \text{min. } 500$ mm, $b = \text{min. } 1000$ mm
Axial misalignment $x = 0$ mm;
 $a = \text{min. } 250$ mm, $b = \text{min. } 600$ mm

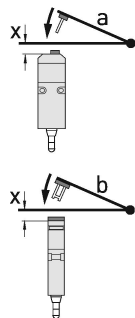
Notes

- 1 slot sealing plug is included in delivery

Dimensions



Actuating radii



The axis of the hinge should be x mm above the top edge of the safety switch and in the same plane.

a = Actuating radius to the plane of the actuator

b = Actuating radius in line with the plane of the actuator

x = Axial misalignment

Attention! x must be referred to the surface of the enclosure and not to the inserted actuator!

Errors and omissions excepted.